

Aquabord

Waterproof Shower panels

Fitting Instructions

Aquabord

Waterproof shower panels

Fitting instructions

Tools & Materials required

A quick and easy alternative to tiles. Panels are completely waterproof and specifically designed to transform your bathroom walls with a hygienic, durable surface that is easily maintained.

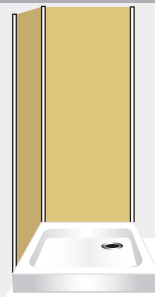
- Aquabord panel adhesive. (2 x 290ml cartridges per panel + applicator gun).
- Measuring tape.
- Masking tape 50mm (2") wide.
- Square
- Electric jigsaw (1mm pitch), hand held saw (15 teeth per inch), junior hacksaw.
- Pencil.
- 1 x tube of silicone sealant (coloured to suit).
- A notched trowel.
- A rubber mallet.

1 Quick and Easy Installation

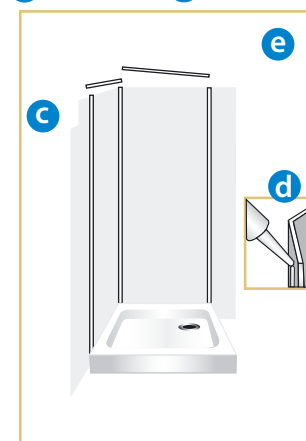
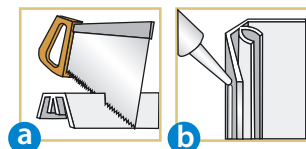
Tips for a successful installation

- Read instructions carefully before beginning the installation.
- **Allow panels to reach room temperature for 30 minutes prior to installation. Always store laid flat, not upright.**
- Surfaces must be free from dirt, film, waxes or any other residues. Tiled and painted surfaces must be sanded to create a key for the adhesive. Newly treated walls should be sealed. Remove any wallpaper.
- When sawing, carefully cut the panel with a jigsaw using a 1mm pitch cutting blade. Alternatively, a hand saw (15 teeth per inch, 1.6mm pitch) can be used.
- **Always cut and drill with the decorative side of the panel face up.**
- Leave any protective film in place as long as possible (if fitted). It may be helpful to support the panels during cutting.
- Always wear Safety Glasses when cutting or drilling laminate panels.
- **Measure twice, cut once!!**
- Apply the Aquabord adhesive thinly and evenly direct to the wall using a notched trowel. DO NOT leave any bare areas. For the best results ensure that all of the area is fully covered. Aquabord adhesive starts to cure in 30 mins and in normal conditions will be fully set after several hours.
- Allow for a 3mm gap at the bottom of the shower wall, this is essential to allow for expansion/movement of the shower tray. Gaps can be filled with silicone sealant to ensure a complete waterproof seal. An optional Cladseal trim is available to waterproof the bottom edge.
- **WARNING - DO NOT use solvent based adhesives or cleaners on this product.**

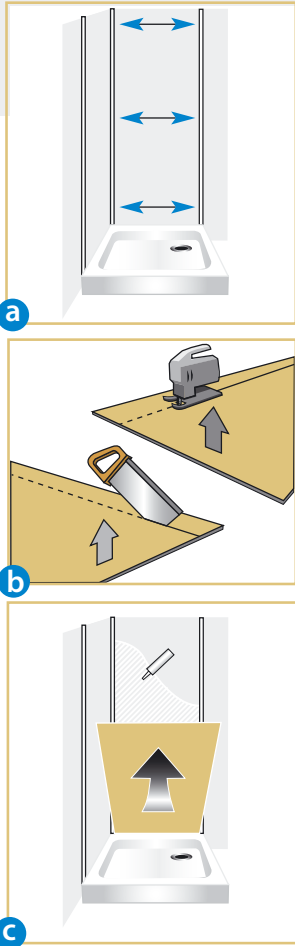
2 Corner Framing



Corner Installation
(2 Panels 1 Corner)



- Firstly, cut the corner section to the height of the required panel. This can be done with a junior hacksaw or a strong pair of snips.
- Apply Aquabord adhesive to outer edges of the corner section and fix directly to the wall, using masking tape to temporarily secure if required.
- Using a spirit level or plumb-line mark the position of the end of the panel directly on the wall and if using a top trim, mark the position of the trim.
- Cut the side edging trim to the same height as the panel and apply Aquabord adhesive to the outer edge of the edging trim and fix directly to the wall, using masking tape to temporarily secure.
- Using a top trim, measure and cut the top trims to fit between the inner sections of the corners and the outer edge trims. Aquabord adhesive the outer edge of the top trim and fix directly on the wall.

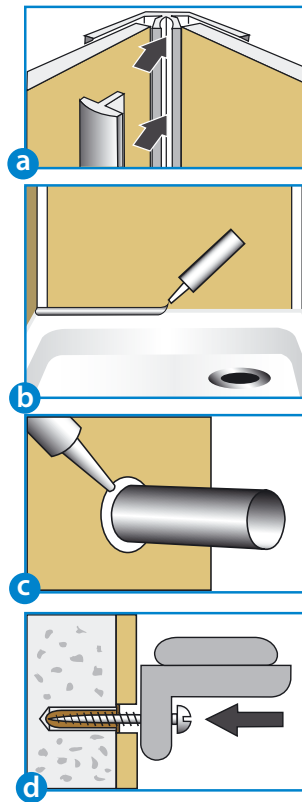


3 Fixing Panels

Please note that the adhesive holding the trims to the wall should be set before fixing the panel, leave to set for a minimum of 1 hour.

- Measure top, middle & bottom of each wall to be panelled. Deduct 15mm overall width for each panel to allow for the corner section.
- Mark sizes on the face of the panel with masking tape and a pencil. Using a jig saw (1mm pitch) or hand saw (15 tpi 1.6mm pitch), cut the panel face-side up. **Measure twice, cut once!!**
- After checking the panel fits, apply Aquabord adhesive over the wall using a notched trowel ensuring all of the area is covered. Offer the panel up to the wall and smooth out all pockets of air. A Decorating roller is ideal for this. **Make sure area is well ventilated.**
- Continue on the other wall for a corner installation or both walls for an alcove installation. If needed hold panel(s) in place with masking tape until adhesive has set and no movement of the panel can occur.

4 Fixtures & fittings



- First cut the corner sections to the same height as the boards. Apply a bead of silicone to the insides of the trim and push home until the trim locks fully into place and silicone squeeze out occurs. Finally measure the distance between the corner & side trim and cut top edging trim to suit. Apply silicone and push top edging trim into place, ensuring that silicone squeeze out occurs. **Trims may need to be tapped home with a rubber mallet, take care not to stike the panel as damage may occur.**
- If not using the optional Cladseal trim fill in the 3mm gap left at the base of the shower with waterproof silicone sealant. Wipe off all excess silicone and clean the panel with a warm soapy cloth.
- A 2-3mm expansion gap is required on cut outs for pipes and fittings, even if collars are to be fitted. The gap must be filled with waterproof sealant.
- Shower attachments can be fitted through the panels using suitable fixings and ensuring the waterproof seal is maintained. Any wall plugs must be pushed completely through the panel into the supporting wall. **Warning** do not overtighten screws as this may damage the panels.

3. Fixing Panels

4. Fixtures & Fittings

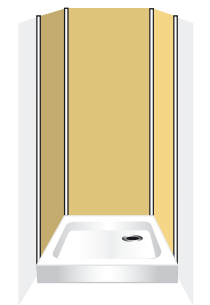
5 Alcove Framing

Please note: To install an Alcove you will require an additional Aquabord pack.

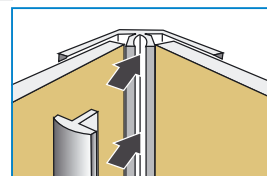
- To install an Alcove frame repeat parts a to c from section 2, Corner Framing, adding the second corner joint.
- Complete parts d & e from section 2, Corner Framing.
- Continue to sections 3. Fixing Panels and 4. Fixtures and Fittings.

Please note: for the back panel you must deduct 30mm from the overall panel width to allow for both corner sections. Ensure measurements are taken from wall to wall.

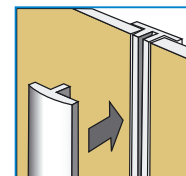
6 Finishing & Maintenance



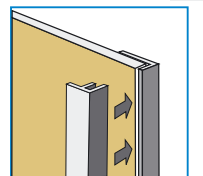
Alcove Installation (3 Panels 2 Corner)



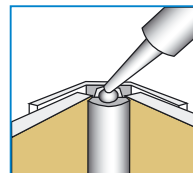
Corner Joint & trim detail



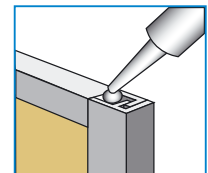
Butt joint & trim detail



Edging or top trim detail



Apply a bead of waterproof silicone to the top corner trim and to the edging and top trim



Guarantee

The manufacturer guarantees to the original consumer/purchaser the workmanship and quality of materials of this product, from the original purchase date for a period of ten (10) years, subject to the following conditions:

- Panels must be correctly installed using Aquabord adhesive and maintained in accordance with the manufacturers recommended instructions.
- It does not cover accidental damage, faulty assembly, abnormal local water conditions, misuse, or lack of proper care and maintenance in accordance with manufacturers guidelines.
- Proof of purchase is required to validate a claim under the guarantee.
- The guarantee is limited to the cost of replacement components only, and excludes all associated labour costs.
- This guarantee does not affect the purchaser's statutory rights. The repair or replacement of spare parts or the entire product is at the manufacturer's discretion.

This product has not been rated for and should not be used in external applications. Use of this product outside its intended application voids any warranty rights. The manufacturer or retailer cannot be held responsible/liable for any property damage or personal injury arising out of improper use or installation of this product.

CLEANING YOUR AQUABORD PANELS

- For regular cleaning use only warm, soapy water or mild detergents applied with a soft cloth.
- Do not use solvent based cleaners, scouring pads, gritty cloths or harsh abrasive cleaners as these will damage the panel.
- Always rinse all surfaces well after cleaning.

5. Alcove Framing

6. Finishing & Maintenance