

**100% waterproof**

**8 beautiful decors**

**Contains no  
wood or fibres**

**Made with tough  
polymers with  
0.3mm wear  
thickness**

**Easy to install**

**Ideal for bathrooms and shower areas.**



**Aquafloor**

**IPSL**

[www.ipsluk.co.uk](http://www.ipsluk.co.uk)

Industrial Plastics Solutions Ltd  
Unit 1 Newhall Road Industrial Estate  
2 Sanderson Street  
Sheffield  
S9 2TW

Tel: 0114 2799 188

**Aquafloor**



**Plan your home around  
the natural beauty  
of practical vinyl flooring**

Easy to install, 100% waterproof, ideal for bathrooms and shower areas



YDM-10-7 Warm Ash



YDM-07-1 Milano



YDM-16-2 Salvador



YDM-04-2 Walnut



YDM-07-4 Roma



YDM-03-6 Ebony



YDM-12-6 Brasilia



YDM-12-9 Janeiro

# Beautiful wood effects in 8 colours



## A collection of European oak designs with a smooth, low gloss surface that resembles the authentic look of natural oiled wood floors.

### Installation - before you start.

**1. How to condition (acclimatise) your floor?**  
Store your luxury Vinyl Planks in the room of installation for 48 hours prior to the installation. During this time the planks should remain in the carton, and the room temperature should be maintained consistent between 68 and 77F (20 to 25 deg C).

**2. How to prepare your subfloor?**  
Make sure that your subfloor is smooth, flat, dry, clean and solid:

2.1. Carpet staples or adhesive residue should be removed prior to installation.

2.2. Subfloors should be flat within a tolerance of 1/16" (2mm) over a span of 4 feet. Any unevenness over 1/16" (2mm) must be sanded down or levelled with a floor leveller. Voids or humps in the subfloor will prevent the planks from locking properly.

2.3. Although these luxury vinyl planks are waterproof, they are not to be used as a submersed water barrier. Your subfloor should be completely dry prior to installation of the vinyl floor. New concrete subfloors need to cure for a minimum of 60 days.

2.4. If the wall is uneven, the floorboards must be adapted to its contours. Mark the floorboards with the contour of the wall. Do not forget to leave 6mm of gap from the wall.

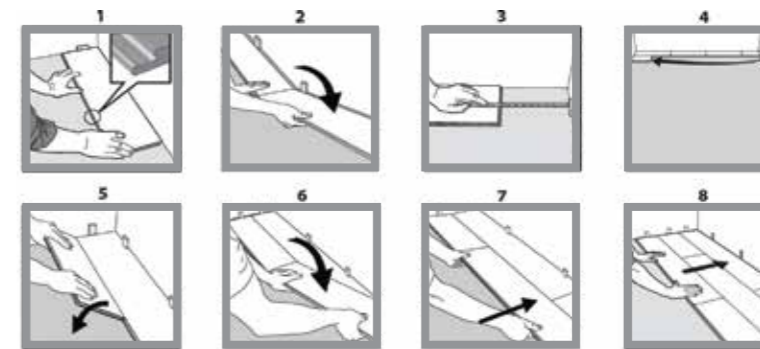
### Important! Different production runs

Vinyl floors can have slight colour variations in between production runs. Before starting the installation it is best to check the production run # which is indicated on the label on the short side (end) of the carton. If you find that you have cartons from different production runs, it is highly recommended that you open 2-3 cartons and install a mix of planks from each different production run on your floor. This will result in a more natural looking floor.

Do not install your luxury vinyl tile over soft subfloors such as carpet or foam underlay. This product is also not to be installed in areas such as saunas or outdoor areas.

### Size information

Size(mm): 150 x 1220mm each  
Thickness(mm): 5mm  
Wear thickness: 0.3mm  
Planks per carton: 10  
Coverage per carton: 1.83m<sup>2</sup>



### Installation method of floor panels

1. Begin in the left-hand corner. Place the floorboard 6mm from the left wall. Use spacers (6mm) between the wall and the floorboard.

2. Insert the end section of the next floorboard at an angle to the first one then lay down. Complete the first row in the same manner.

3. Place the final floorboard face down with the short side without the locking strip towards the wall. The distance to the wall should be 6 mm. Mark where the floorboard is to be cut.

4. Start the second row with the leftover cut part of the last plank of the previous row. This small plank should measure at least 30 cm. Otherwise use another plank that should be cut in two. In any case, the short sides cut should be at least 30cm.

5. Place the floorboard at an angle against the floorboard in the previous row, press forward and fold down at the same time.

6. Place the short end of the floorboard at an angle against the previous installed floorboard and fold down. Ensure that the board is positioned in the integral locking strip of the floorboard in the previous row.

7. Lift both the current as well as the previous plank from this row, push to slide the current plank against the row in front so it aligns with the previous plank. The current and previous plank can now be folded completely down to a horizontal position.

8. After 2-3 rows: adjust the distance to the front wall by placing spacers of 6mm. Keep the spacers in position during the entire time of installation and remove once the installation is completed.

### Care and maintenance

- Sweep or vacuum daily using soft bristle attachments.
- Clean up spills and excessive liquids immediately.
- Damp mop as needed and use cleaners recommended for no-wax vinyl floors.
- Protect floor from constant direct sunlight.
- Use proper floor protection devices such as felt protectors under furniture.
- Make sure pets have nails clipped regularly.
- Do not use abrasive cleaners, bleach or wax to maintain the floor.
- Do not drag or slide heavy objects across the floor.