



AquaFloor

Natural-Look Flooring Range

Preparation

- * Condition your AquaFloor by storing them in the room of installation. During this time the flooring should remain in the carton and the room temperature should be maintained consistent between 20°C to 25°C.
- * Prepare your subfloor by making sure it is smooth, flat, dry, clean and solid.
- * Carpet staples or adhesive residue should be removed prior to installation.
- * Subfloors should be flat within a tolerance 2mm over a span of 1.2m. Any unevenness over 2mm must be sanded down or levelled with a floor leveler. Voids or humps in the subfloor will prevent the flooring from locking properly.
- * Although these AquaFloor products are waterproof, they should not be used as a moisture barrier. Your subfloor should be completely dry prior to installation of the AquaFloor. New concrete subfloors need to cure for a minimum of 60 days.
- * AquaFloor products can have slight colour variations in between production runs. Before starting the installation, it is best to check the items and if variations are evident install a mix of items from each carton. This will result in a more natural looking finish.
- * Do not install the AquaFloor products over soft subfloors such as carpet or foam underlayments. The AquaFloor should also not be installed in areas that have a potential for flooding, such as saunas, or outdoor areas.

Care and Maintenance

- * Clean up spills and excessive liquids immediately.
- * Do not use abrasive cleaners, bleach or wax to maintain floor.
- * Damp mop as needed and use cleaners recommended for no-wax vinyl floors.
- * Sweep or vacuum using soft bristle attachments.
- * Use proper floor protection devices such as felt protectors under furniture.
- * Do not drag or slide heavy objects or furniture across the floor.
- * Make sure pets have nails clipped regularly.
- * Protect floor from constant direct sunlight.

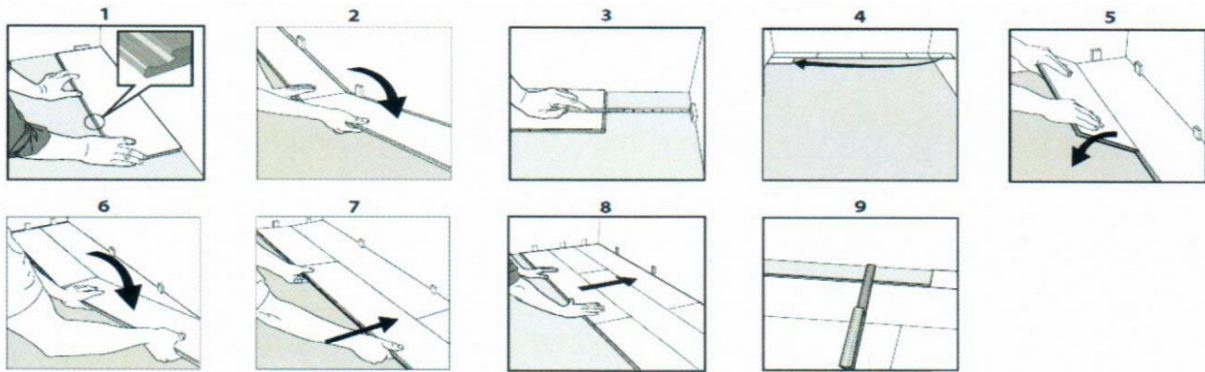




AquaFloor

Natural-Look Flooring Range

Installation



1. Begin laying in the left-hand corner. Place the AquaFloor panel 6mm from the left wall. Use spacers between the wall and the AquaFloor panel.
2. Insert the end section of the next AquaFloor panel at an angle to the first one, then lay down. Complete the first row in the same manner.
3. Place the final AquaFloor panel in that row face down and the short side without the locking strip towards the wall. The distance to the wall should be 6mm. Mark where the AquaFloor panel is to be cut.
4. Start the second row with the leftover cut part of the AquaFloor panel from the previous row. This small piece should measure at least 30cm. Otherwise, use another AquaFloor panel that should be cut by two. At any case, the short sides cut are distant from at least 30cm.
5. Place the AquaFloor panel at an angle against the AquaFloor panels in the previous row, press forward and fold down at the same time.
6. Place the short end of the AquaFloor panel at an angle against the previous installed AquaFloor panel and fold down. Ensure that the panel is positioned in the integral locking strip of the AquaFloor panel in the previous row.
7. Lift both the current as well as the previous panel from this row, push to slide the current panel against the row in front so it aligns with the previous panel. The current and previous panel can now be folded completely down to horizontal position.
8. After 2-3 rows: adjust the distance to the front wall by placing spacers of 6mm. Keep the spacers in position during the entire time of installation and remove once installation is completed.
9. If the wall is uneven, the AquaFloor panels must be adapted to its contours. Mark the AquaFloor panels with the contour of the wall. Do not forget to leave a 6mm of gap from the wall. This procedure shall be used also for the first row if necessary.