



# AquaWall

Tile-Effect Wall Panel Range

## About

Aquawall is a high quality, solid, UV resistant and sustainable PVC wall cladding for interior use. The Aquawall products are waterproof and are particularly well suited for wet and damp areas.

The Aquawall products can be used in domestic environments for example a:

- Bathroom
- Kitchen
- Laundry Room
- Garage
- Basement
- Bedroom
- Living Room

Such is the versatility of the Aquawall products it is not uncommon for them to be used in a wide range of areas outside the home also, including:

- Offices
- Sporting Halls
- Shops
- Prefab Houses
- Caravans and Mobile Homes
- Boats.

The Aquawall products cannot be installed in the following places:

- Outdoors
- In spaces with a temperature in excess of 60°C or lower than -10°C such as a sauna or refrigerated areas
- On walls where the contact temperature may be above 60°C such as a chimney flue, by a stove or radiators.
- In poorly ventilated areas.
- In areas where there is an abnormally high concentration of sulphur (H<sub>2</sub>S).

During the manufacture process there can occasionally be some variation in shade or pattern. Please check for any variation before fitting. We are always happy to try to provide a better match before fitting, but please note we cannot accept any consequential costs post fitting.



# AquaWall

Tile-Effect Wall Panel Range

## Preparation

\* Condition your Aquawall products by storing them in the room of installation. They should be stored flat for 48 hours and kept at an ideal temperature of 20°C before and during installation.

\* Prepare the installation surface, if you have a flat solid surface you will be able to perform an adhesive fixing therefore, ensure that the surface is dry and free from dust or grease. If the surface is uneven or damaged, either make good into a flat solid surface or create a sturdy support frame.

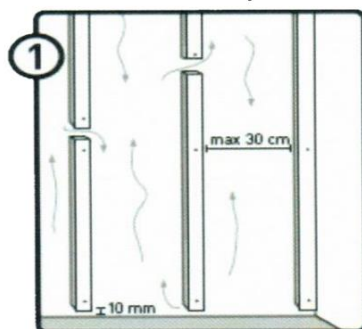
\* If a sturdy support frame is required to create an even surface, it is usually wooden lattice that is chosen. Install the supports in the opposite direction to how the Aquawall products are to be installed. The maximum distance allowed between supports is 30cm. It is also recommended to provide 10mm open spaces in the framework to allow for some air circulation. (Image 1).

\* Take into account that the Aquawall products may expand and contract in the event of major changes in temperature in an area. Allow for this by leaving extra space at the sides of the panelled area (1mm per running metre of Aquawall on each side) For example: A wall length of 5m should allow for a 5mm gap at each side of area that is to be panelled.

\* For an adhesive fixing, use IPSL's High Power Flexi Bond adhesive and apply evenly across the products in 10cm x 10cm squares to form a grid system, don't apply too close to the edges or this will spill out onto the face.

\* For installation in a shower area, around a bath or very damp places, a line of silicone must be included in the installation process in the connections between the Aquawall products themselves as well as any support trims, to ensure a completely waterproof joint.

\* We strongly recommend using the Sealux base seal trim in showers and other wet areas, this will ensure a waterproof edge that will last.





# AquaWall

Tile-Effect Wall Panel Range

## Installation

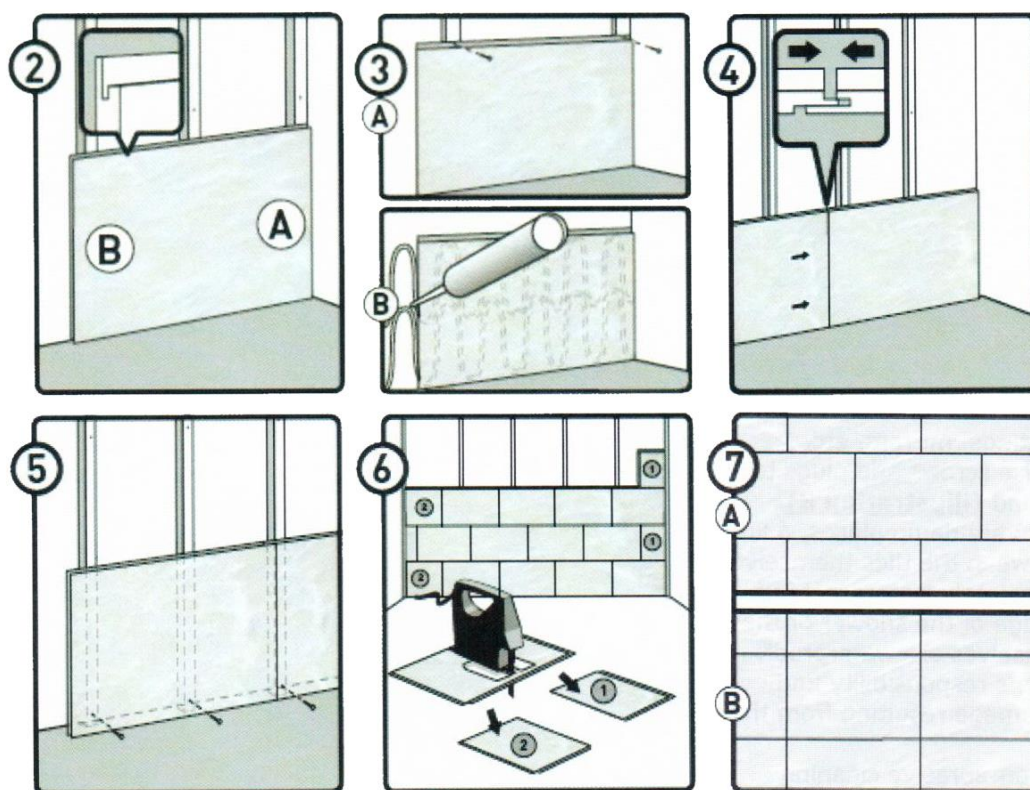
- \* The Aquawall products can be cut or shortened easily using a handsaw, table saw, portable circular saw or a cutting saw. Please take the necessary precautions when handling sharp tools.
- \* If using the Aquawall XL panels, measure the width and height of the wall and cut the panels to size if required.
- \* When using any Aquawall product the Sealux base seal trim, if using, will require being fitted first. If using a top trim with the Aquawall XL panels, this will also require being fitted first. Side edge and internal corner trims can be connected to and fitted inline with the Aquawall products when working L to R or R to L.
- \* Place the Aquawall product with side "A" facing to the right. (Image 2)
- \* Then fix via one of the following methods: (Image 3)
  - A: On a frame with nails or screws via the little tab at the top. For a perfect fit for the next row, or panel, make sure that the nail or screw is completely flush with the tab.
  - B: On a flat solid surface with adhesive as previously described in the Preparation section. The adhesive will create a firm hold within 20 minutes and will fully cure in a room temperature environment in 24 hours.
- \* Connect the next Aquawall product along the cross-cut side "B" by fully inserting the tab into the groove (Image 4). If using the Aquawall Tiles, make sure that the tiles always fit each other properly along the length, so that the next row fits perfectly parallel. Create a full row this way by fitting the tiles via the end tab with nails, screws or adhesive. Cut the tile to size at the end of the row.
- \* You may screw the first row of Aquawall tiles at the bottom (if a Sealux trim is not being used) if it will be covered over by the shower base, bath or skirting (Image 5) Make sure the bottom row is firmly attached before continuing.
- \* Take the offcut piece from the previous row (if at least 30cm long) and start the next row with this if needed (Image 6). You can opt to install the Aquawall Tiles (Image 7) in correlation (A) or parallel (B). The Aquawall products can be placed vertically or horizontally. If using Tiles complete installation row by row.





# AquaWall

Tile-Effect Wall Panel Range



## Finishing & Maintenance

\* Do not attach heavy accessories like coat hooks, light fittings, mirrors etc. directly to the Aquawall products. Alternatively drill holes through the product and use screws and plugs to attach the accessories securely in the wall behind (Image 8)

\* For maintenance use ordinary household products. You can thoroughly clean the Aquawall products using a soft, non-abrasive cleaning agent. However, you usually only need a damp cloth to clean the Aquawall products. Do not use abrasives, aggressive substances or chloride-based cleaning products. Solvents should also not be used.

